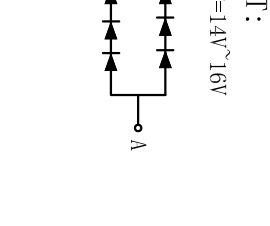
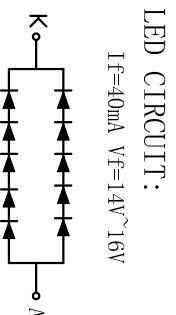
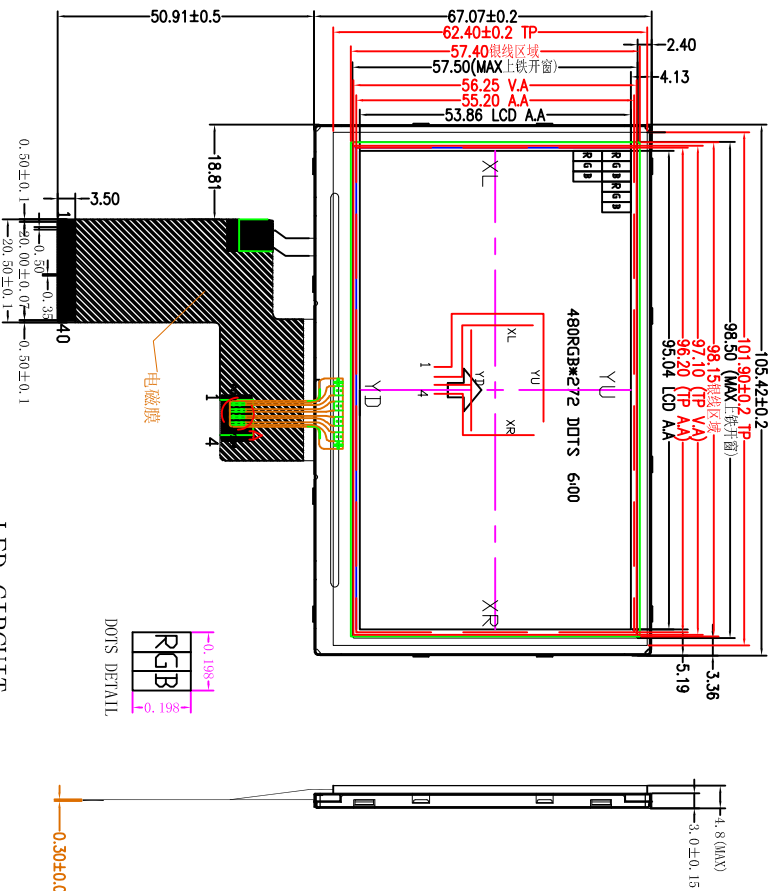




VER	REVISION RECORD	Date	Name
A	NEW RELEASE	2021/11/29	ZHMO
B			
C			

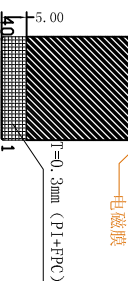


- NOTE
- Lcd Display Type: 4.3' TFT+RTP, 480*272
 - Polarzier Mode: Transmissive+EYW film, normally white
 - Viewing Direction: 6 O' CLOCK
 - Logic Supply Voltage: 3.3V
 - Control IC: ST7282
 - Backlight: White(5*2 Led), Iled=40mA, Vled=15.0V
 - Backlight brightness and uniformity: 500cd/m², >=80%
 - Operating Temp: -20 TO 70°C
 - Storage Temp: -30 TO 80°C
 - Connector: FPC
 - Ulteriorly Tolerance: ±0.2MM

RTP 说明:

- 结构: film+glass+tail
film 雾面防牛 (0.188mm)
glass: 普通 0.7mm
tail: PPC (pitch=1mm)
- 电路等级: DC5V 35mA
- 绝缘阻抗: ≥20MΩ (25V DC)
- 线性: ≤1.5%
- 透光率: ≥75%
- 操作压力: 20-100g
- 打点寿命: ≥1,000,000次
- 笔划寿命: ≥100,000次
- 端点阻抗: X:300-1100Ω Y:100-500Ω
- 响应时间: ≤12ms

PIN	OUT
1	YU
2	XL
3	YD
4	XR



1	LED-
2	LED+
3	GND
4	VDD
5	R0
6	R1
7	R2
8	R3
9	R4
10	R5
11	R6
12	R7
13	G0
14	G1
15	G2
16	G3
17	G4
18	G5
19	G6
20	G7
21	B0
22	B1
23	B2
24	B3
25	B4
26	B5
27	B6
28	B7
29	GND
30	CLK
31	DISP
32	NC
33	NC
34	DE
35	NC
36	GND
37	XR
38	YD
39	XL
40	YU

深圳市集目显示技术有限公司
Shenzhen Eagle Vision Display Technology Co., Ltd

Dwg:	CUSTOMER	LCM TYPE
Check:	MODULE	4.3 吋 TFT+RTP
Dim: MM	Visual Angle	Material No.
		SCALF: 1:1
		SHEET 1 OF 1