

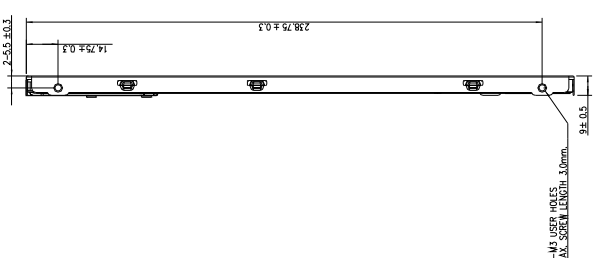
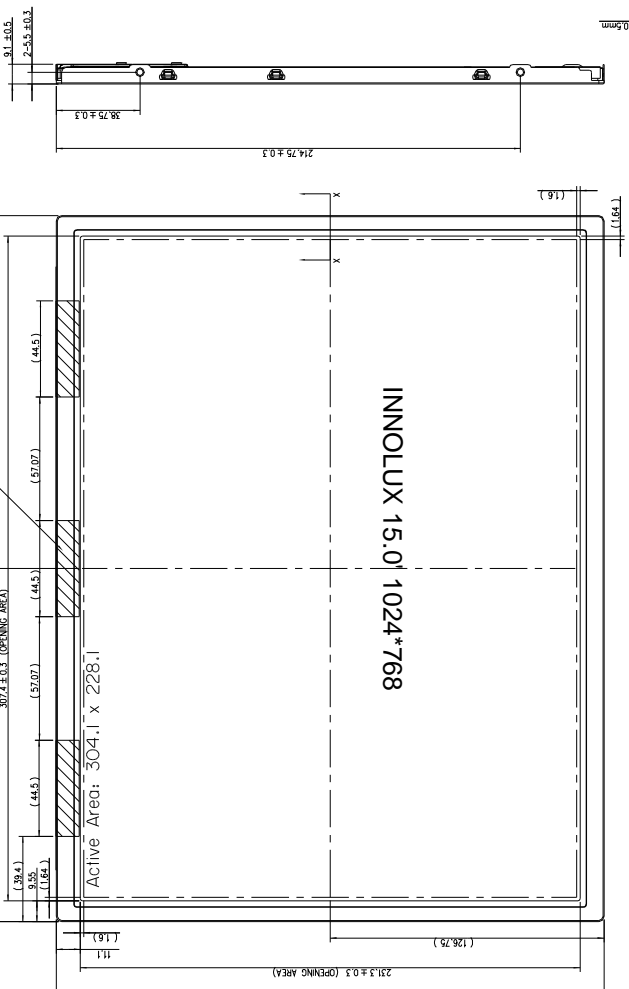
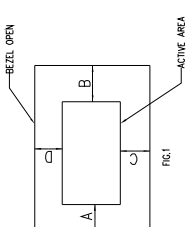
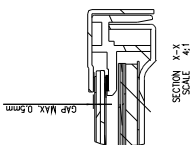
Outline Drawing

客户确认签名
Customer approved

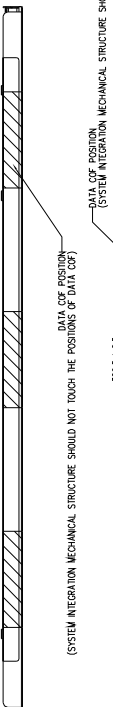
日期
Date



VER	REVISION RECORD	Date	Name
A	NEW RELEASE	2017/07/22	LT
B			
C			



PIN	NAME
1	VCC
2	VCC
3	NC
4	LR/LUD
5	RX0-
6	RX0+
7	GND
8	RX1-
9	RX1+
10	GND
11	RX2-
12	RX2+
13	GND
14	RXCLK-
15	RXCLK+
16	GND
17	RX3-
18	RX3+
19	NC
20	SPL68

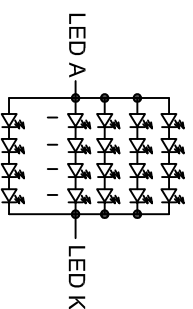


MODEL NO.: G150XNE

SUFFIX: L03

NOTE

- 1.Lcd Display Type: 15.0" TFT, 1024*768, IPS, LVDS
- 2.Polarizer Mode: Transmissive, normally black
- 3.Viewing Direction: ALL
- 4.Logic Supply Voltage: 3.0V
- 5.Control IC:
- 6.Backlight: White(4*20 Led), Iled=400mA, Vled=12.0V
- 7.Backlight brightness and uniformity: 300cd/m2, >=80%
- 8.Operating Temp: -20 TO 70
- 9.Storage Temp: -30 TO 70
- 10.Connector:
- 11.Utteriorly Tolerance: ±0.2MM



LED=4*20 CHIPS Iled=400mA, Vled=12.0V



深圳市集目显示技术有限公司
Shenzhen Eagle Vision Display Technology Co., Ltd

LCM TYPE

15.0吋 TFT

Material No.

Dwg: CUSTOMER

Check: MODULE

EVT150A1W20L01

SCALE: 1:1

Visual Angle



SHEET 1 OF 1

DR: WMM