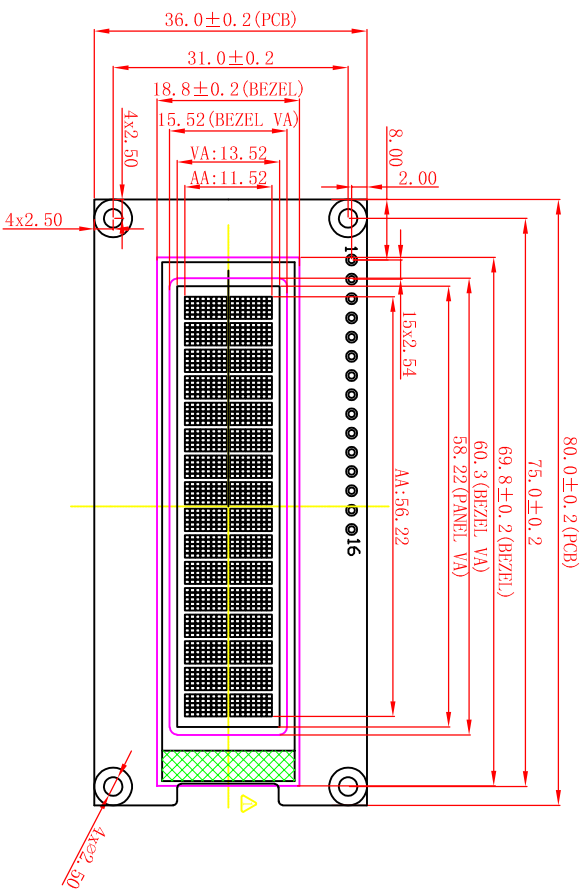


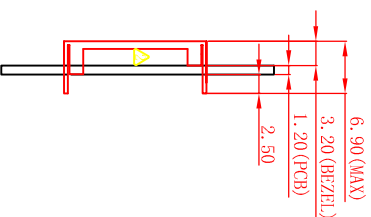


VER	REVISION RECORD	Date	Name
A	NEW RELEASE	2021/02/25	Zhou
B			
C			

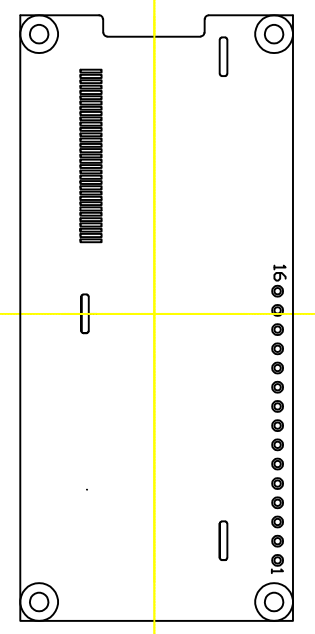
Front View



Lateral View



Rear View



PIN DEFINE

PIN NO.	SYMB0
1	VSS
2	VDD
3	/RST
4	D/C
5	R/W
6	/CS
7	RD
8	DB0
9	DB1
10	DB2
11	DB3
12	DB4
13	DB5
14	DB6
15	DB7
16	NC

NOTE

1. Display Type: PM-OLED, 16x2 characters
2. Viewing Direction: ALL
3. Logic Supply Voltage: VCC=3.3V OR 5.0V
4. OLED Panel driving voltage: 12.6V
5. Control IC: US2066
6. Display color: White
7. Operating Temp: -40 TO 80
8. Storage Temp: -40 TO 85°C
9. Uteriorly Tolerance: ±0.2MM

- EVD162AM16PW01
- EV---Company Code
- D---OLED
- 162---16*2 Characters
- A---Serial No. A-Z
- M---Module; P--Panel
- 16---Interface pin
- P---Parallel Interface
- W---Display color: White/Blue/Green
- 01---Ver. No.



深圳市集目显示技术有限公司
Shenzhen Eagle Vision Display Technology Co., Ltd

LCM TYPE

Dwg: CUSTOMER Material No.

Check: MODULE EVD162AM16PW01 SCALE: 1:1

Dim: MM Visual Angle SHEET 1 OF 1