

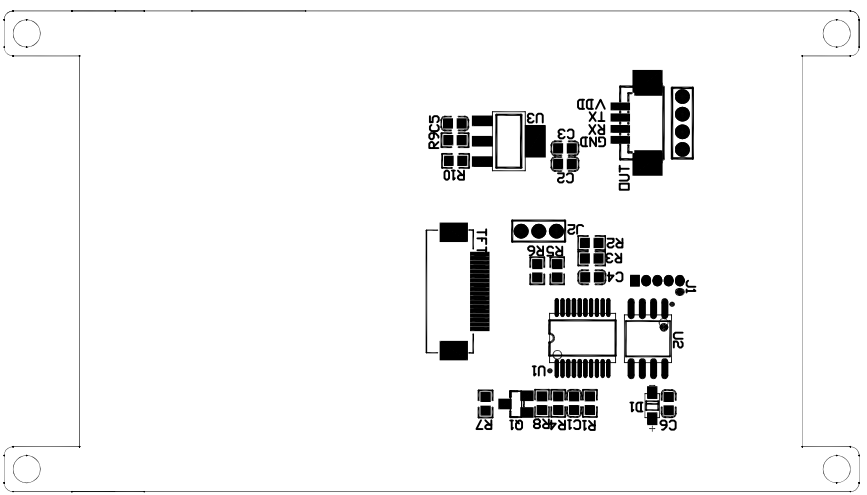
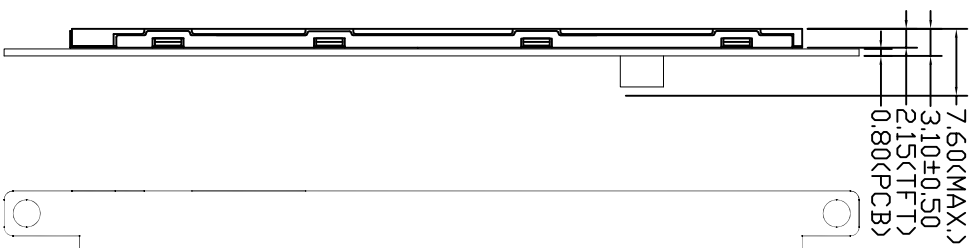
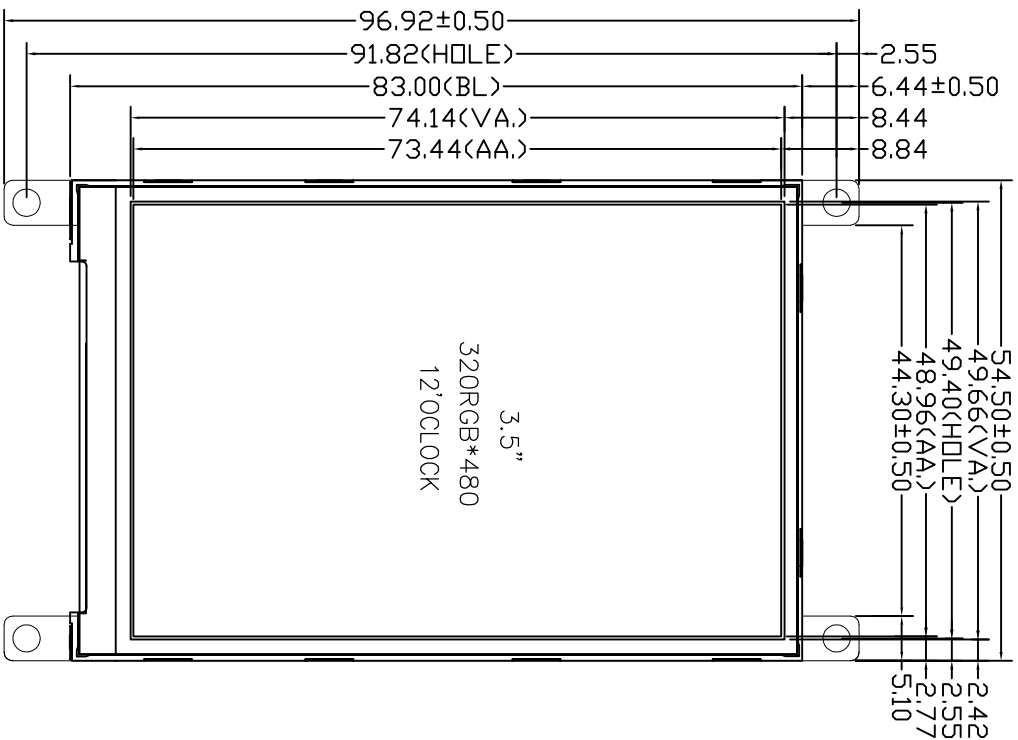
Outline Drawing

客户确认签名
Customer approved

日期
Date



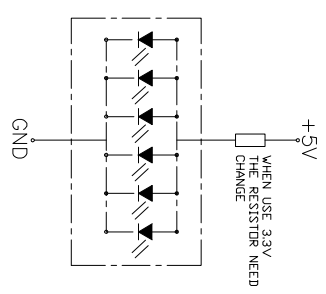
VER	REVISION RECORD	Date	Name
A	NEW RELEASE	2020/06/15	zxp
B			
C			



PIN DEFINE

PIN NO.	SYMBOL
1	GND
2	RX
3	TX
4	VDD

LED CIRCUIT DIAGRAM
Vf=2.7~3.0V(I_f=120mA)



RoHS COMPLIANT YES
UNMARKED TOLERANCE ±0.3

- NOTE
- 1.Lcd Display Type: 3.5" SMART UART TFT LCM,320*480
 - 2.Polarzier Mode:Transmissive, normally white
 - 3.Viewing Direction: 12 O'CLOCK
 - 4.Logic Supply Voltage: 5.0V OR 3.3V
 - 5.Control IC:
 - 6.Backlight: White
 - 7.Backlight brightness and uniformity: 350cd/m2, >=80%
 - 8.Operating Temp: -20 TO 70°C
 - 9.Storage Temp: -30 TO 80°C
 - 10.Connector:
 - 11.Ulteriorly Tolerance:±0.2MM

深圳市集目显示技术有限公司
Shenzhen Eagle Vision Display Technology Co., Ltd

LCM TYPE
3.5吋串口TFT
Material No.

Dwg:	CUSTOMER	LMT035U4NT01	SCALE: 1:1
Check:	MODULE		SHEET 1 OF 1
Visual Angle			

产品制作 ksepbjmw 田