

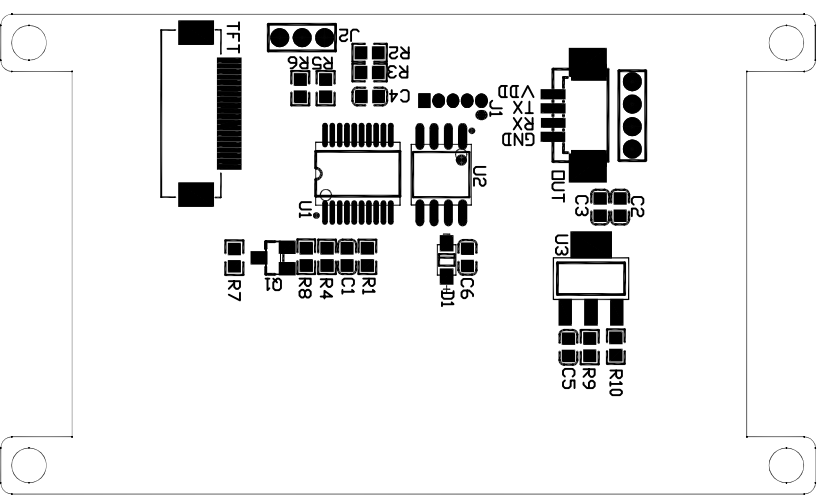
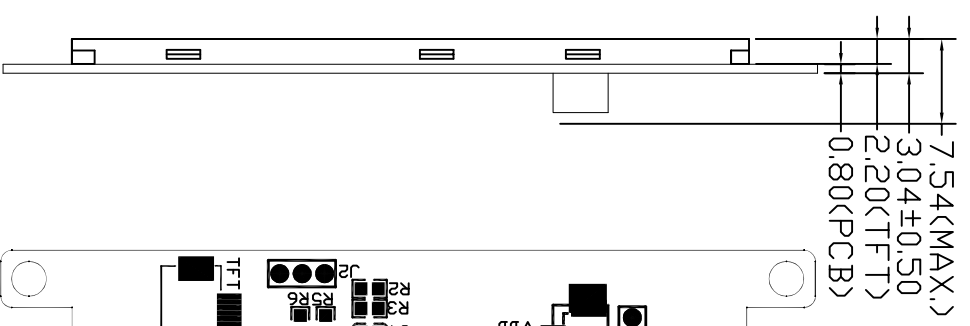
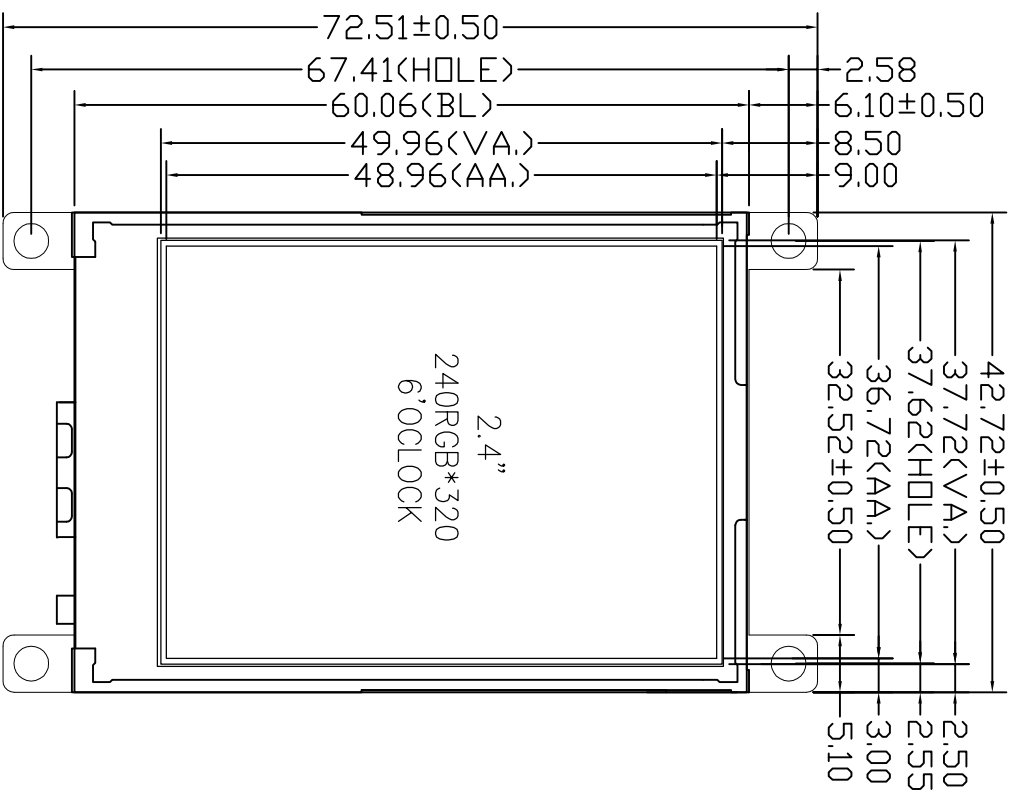
Outline Drawing

客户确认签名
Customer approved

日期
Date



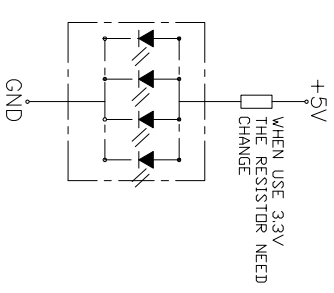
VER	REVISION RECORD	Date	Name
A	NEW RELEASE	2020/06/15	zxp
B			
C			



PIN DEFINE

PIN NO.	SYMBOL
1	GND
2	RX
3	TX
4	VDD

LED CIRCUIT DIAGRAM
Vf=2.7~3.0V(I_f=80mA)



NOTE

- 1.Lcd Display Type: 2.4" SMART UART TFT LCM,240*320
- 2.Polarzier Mode:Transmissive, normally white
- 3.Viewing Direction: 6 O'CLOCK
- 4.Logic Supply Voltage: 5.0V OR 3.3V
- 5.Control IC:
- 6.Backlight: White
- 7.Backlight brightness and uniformity: 250cd/m2, >=80%
- 8.Operating Temp: -10 TO 60°C
- 9.Storage Temp: -20 TO 70°C
- 10.Connector:
- 11.Ulteriorly Tolerance:±0.2MM

深圳市集目显示技术有限公司

Shenzhen Eagle Vision Display Technology Co., Ltd

Dwg:	CUSTOMER	LMT024U4NT01	LCM TYPE	2.4吋串口TFT
Check:	MODULE		Material No.	
Visual Angle			SCALE: 1:1	
			SHEET 1 OF 1	

产品制作 ksepboun