

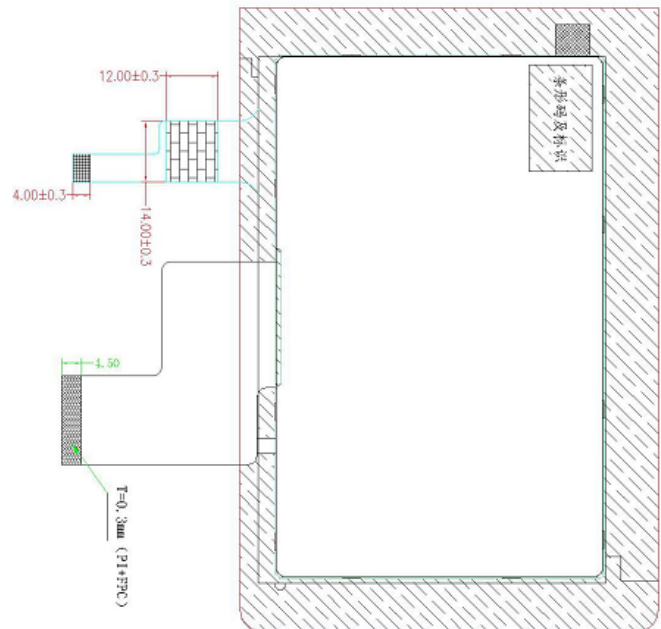
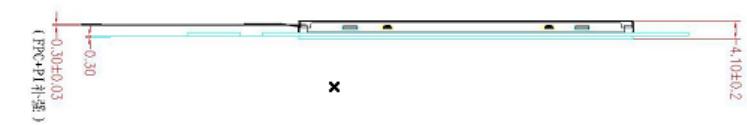
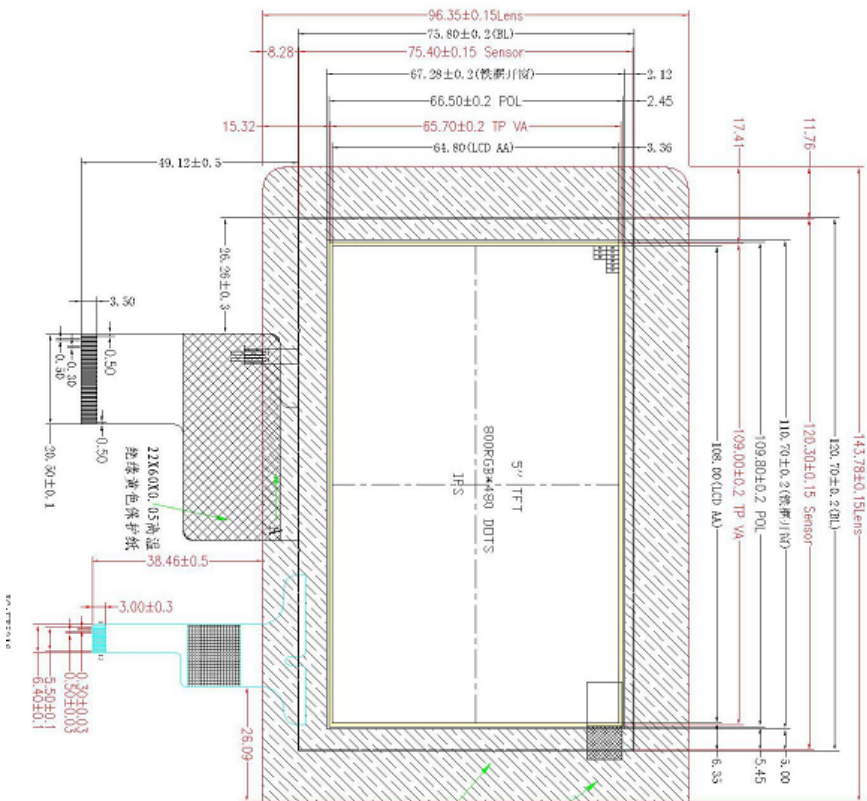
# Outline Drawing

客户确认签名  
Customer approved

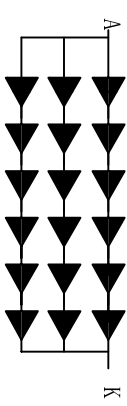
日期  
Date



VER	REVISION RECORD	Date	Name
A	NEW RELEASE	2015/02/09	Song
B	增加CTP, 改善背光亮度	2019/9/30	
C			



PIN	NAME
1	LED K
2	LED A
3	GND
4	VDD
5	R0
6	R1
7	R2
8	R3
9	R4
10	R5
11	R6
12	R7
13	G0
14	G1
15	G2
16	G3
17	G4
18	G5
19	G6
20	G7
21	B0
22	B1
23	B2
24	B3
25	B4
26	B5
27	B6
28	B7
29	GND
30	DCLK
31	NC
32	HSYNC
33	VSYNC
34	DPN
35	NC
36	GND
37	X1
38	X2
39	Y1
40	Y2



- NOTE**
- 1.Lcd Display Type: 5.0" TFT, 800\*480, IPS
  - 2.Polarzier Mode: Transmissive, normally white
  - 3.Viewing Direction: ALL
  - 4.Logic Supply Voltage: 3.0V
  - 5.Control IC:
  - 6.Backlight: White(6\*3 Led) ILed=60Ma, Vled=18.0V
  - 7.Backlight brightness and uniformity: 580cd/m2, >=80%
  - 8.Operating Temp:-20 TO 70°C
  - 9.Storage Temp: -30 TO 80°C
  - 10.Connector: FPC
  - 11.Ulteriorly Tolerance: ±0.2MM

PIN	NAME	PIN	NAME
1	GND	7	SDA
2	NC	8	SCL
3	NC	9	REST
4	NC	10	INT
5	NC	11	VDD
6	GND	12	VDD

**深圳市集目显示技术有限公司**  
Shenzhen Eagle Vision Display Technology Co., Ltd

Dwg:	CUSTOMER	Material No.
Check:	MODULE	SCALE: 1:1
Visual Angle	LMT050E1WC40R01	SHEET 1 OF 1