

Outline Drawing

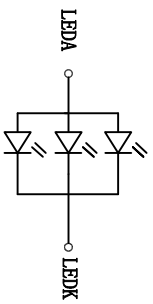
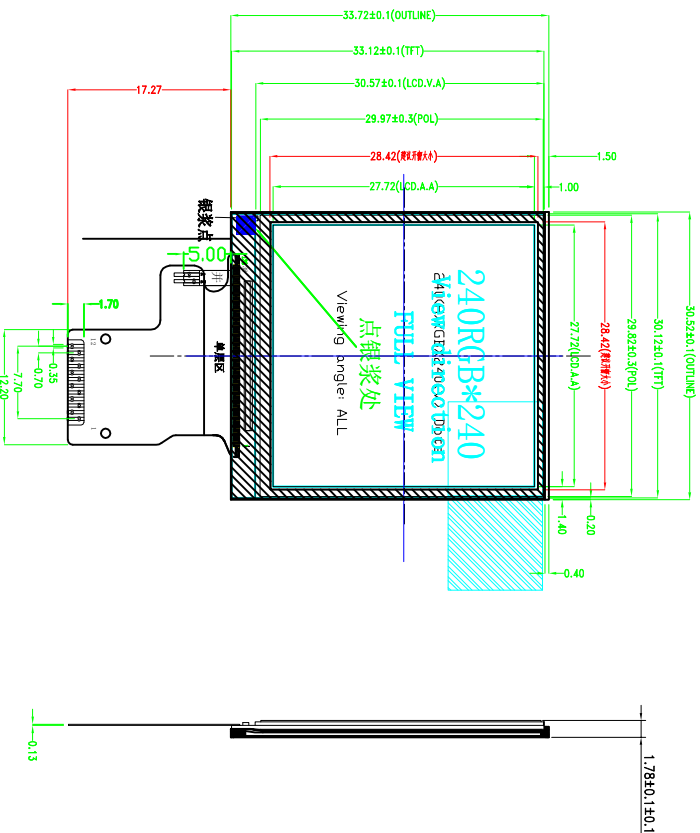
客户确认签名
Customer approved

日期
Date



VER	REVISION RECORD	Date	Name
A	NEW RELEASE	2019/03/23	L1
B			
C			

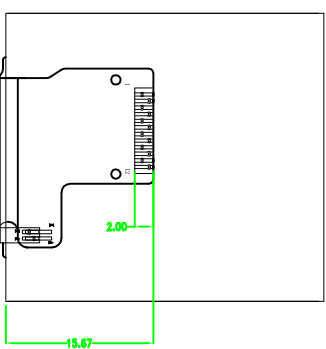
PIN	NAME
1	GND
2	LEDK
3	LEDA
4	VDD2, 8V
5	GND
6	GND
7	RS
8	CS
9	SCL
10	SDA
11	RESET
12	GND



BACKLIGHT LED CIRCUIT

NOTE

1. Lcd Display Type: 1.54'TFT, 240*240, IPS
2. Polarizer Mode: Transmissive, normally BLACK
3. Viewing Direction: ALL
4. Logic Supply Voltage: 3.0V
5. Control IC: ST7789V2
6. Backlight: White(3*Led), I_{led}=45Ma, V_{led}=3.0V
7. Backlight brightness and uniformity: 300cd/m², >=80%
8. Operating Temp: -20 TO 70°C
9. Storage Temp: -30 TO 80°C
10. Connector: FPC
11. Ulteriorly Tolerance: ±0.2MM



FPC弯折示意图
FPC展开出货图

深圳市隼目显示技术有限公司
 E.V.T Shenzhen Eagle Vision Display Technology Co., Ltd
 LCM TYPE 1.54" TFT
 Material No.

Dwg:	CUSTOMER		Material No.
Check:	MODULE	LMT0154BIW12S01	SCALE: 1:1
	Visual Angle		SHEET 1 OF 1